



Kicking Horse Canyon Project – Phase 4

**Town of Golden Council
October 8, 2019**

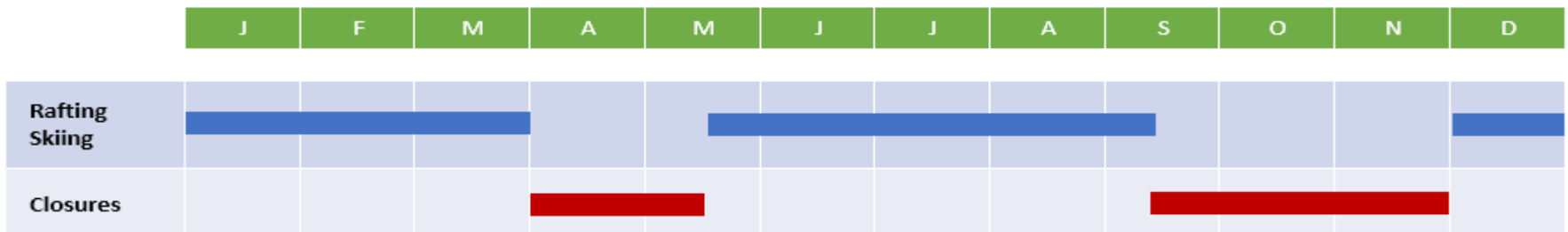
Presentation Overview

- Traffic Management Strategy
- Operations Review
- Operational Adjustments
- Performance (simulations)
- Additional Measures – Golden to Radium
- Moving Forward



Traffic Management Strategy

- Safety of crews & travelling public is highest priority
- Challenging construction area; local detour options not available
- Highway closures required to ensure safety & reliability during construction
- Key principles limiting closures to off-peak periods:
 - Avoiding closures during the daytime in summer
 - Potential for extended 24-hour shoulder-season closures
 - Emphasis on night-time work year-round
 - Extensive communications and continued engagement
- Access to first responders on short notice at all times



Operations Review

Information & analysis

- Meetings & site visits for direct observations
- Review of traffic count data

Findings

- Alternate route is safe & has fully adequate capacity
- Optimization opportunities with temporary & permanent adjustments / enhancements
- Locations tend to be those that already experience strain in peak periods

Operational Adjustments



Operational Adjustments



Operational Adjustments



Operational Adjustments

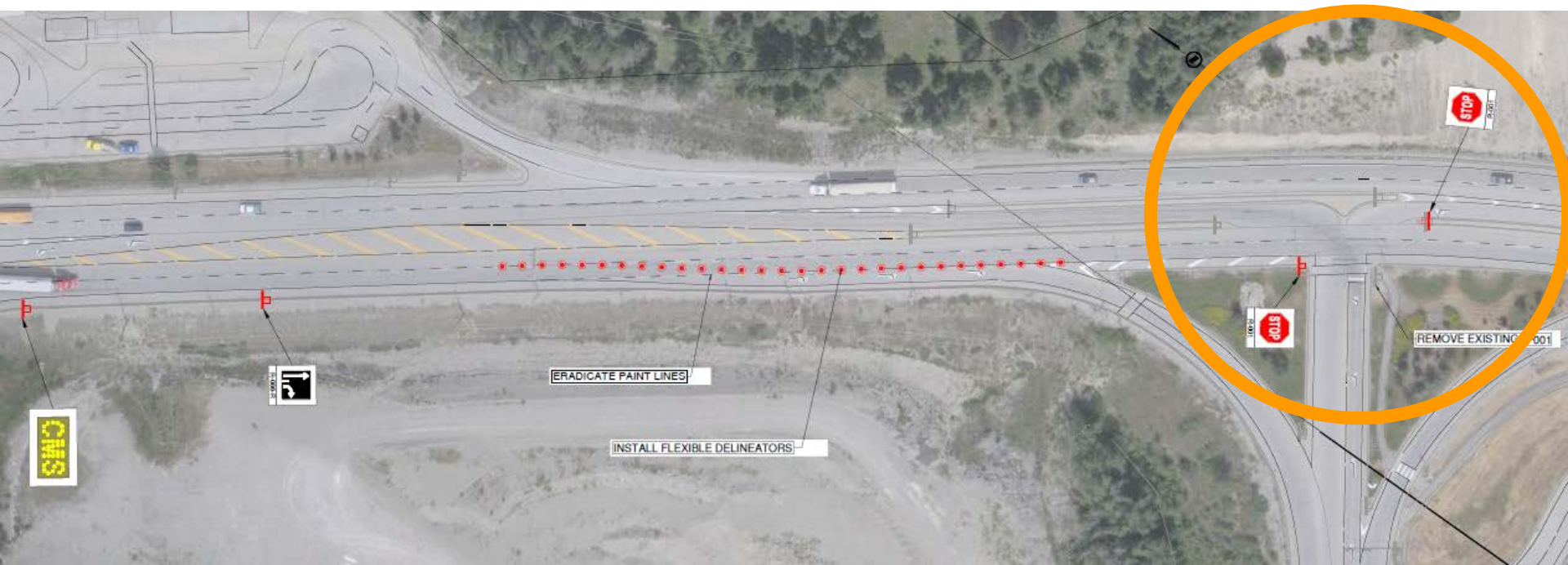


Operational Adjustments



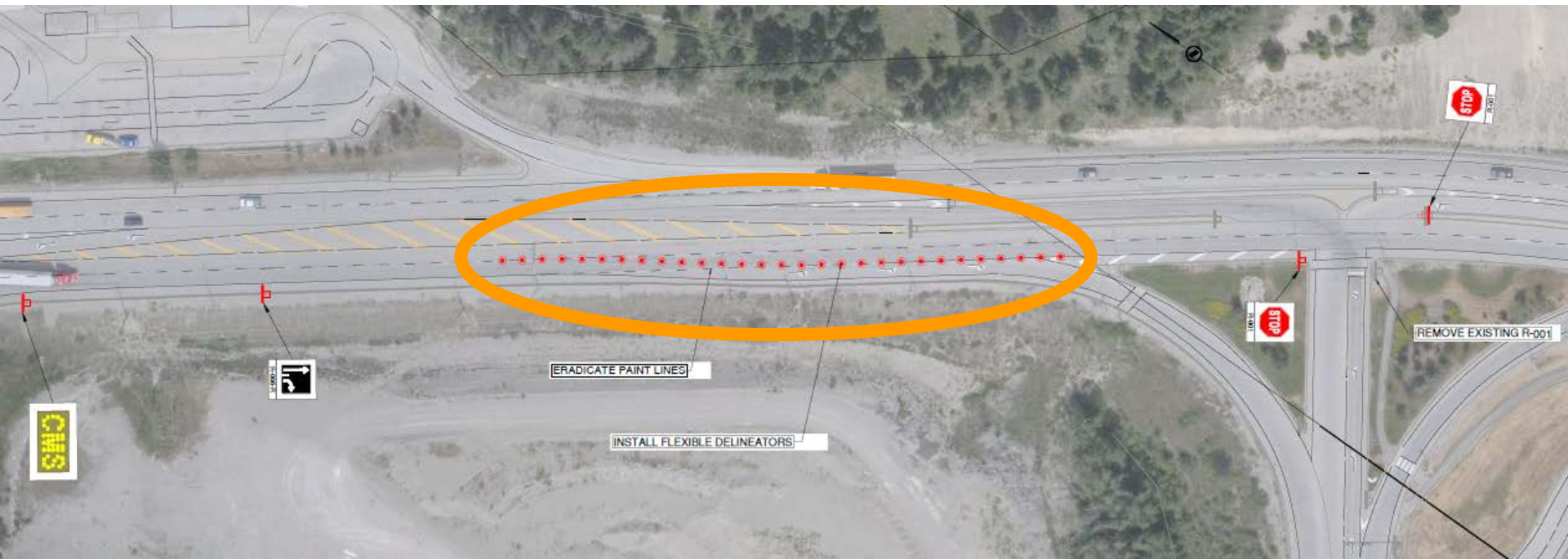
Highway 1 / 95: Stop Sign Changes

- Move the stop sign from the south approach to the westbound left-turn movement and eastbound through movement
 - Prioritize the detour movement
 - Traffic on the other movements is expected to be light



Highway 1 / 95 Delineation

- Delineate the Highway 1 eastbound through and right-turn traffic
 - Improves operations of the intersection
 - Slows down Highway 1 detour traffic



Highway 1 / 95 Delineation

- Portable Changeable Message Sign for Highway 1 eastbound to read:
 - HWY 1 CLOSED AHEAD
 - FOLLOW DETOUR SIGNS
 - VIA HWY 95/ HWY 93



Businesses Are Open Signage

- Provide “Businesses are open” signage on Highway 1 eastbound prior to Highway 95 for businesses up the hill

BUSINESSES OFF EXIT 780 ARE OPEN

GOLDEN DONALD UPPER ROAD

GLENOGLE LODGE

CANYON RIDGE

GOLDEN VIEW ROAD

CANYON'S EDGE

GOLDEN RIM INN

WHISPERING SPRUCE

ALPINE RAFTING

SNOWPEAK RENTALS

LAFONTAINE ROAD

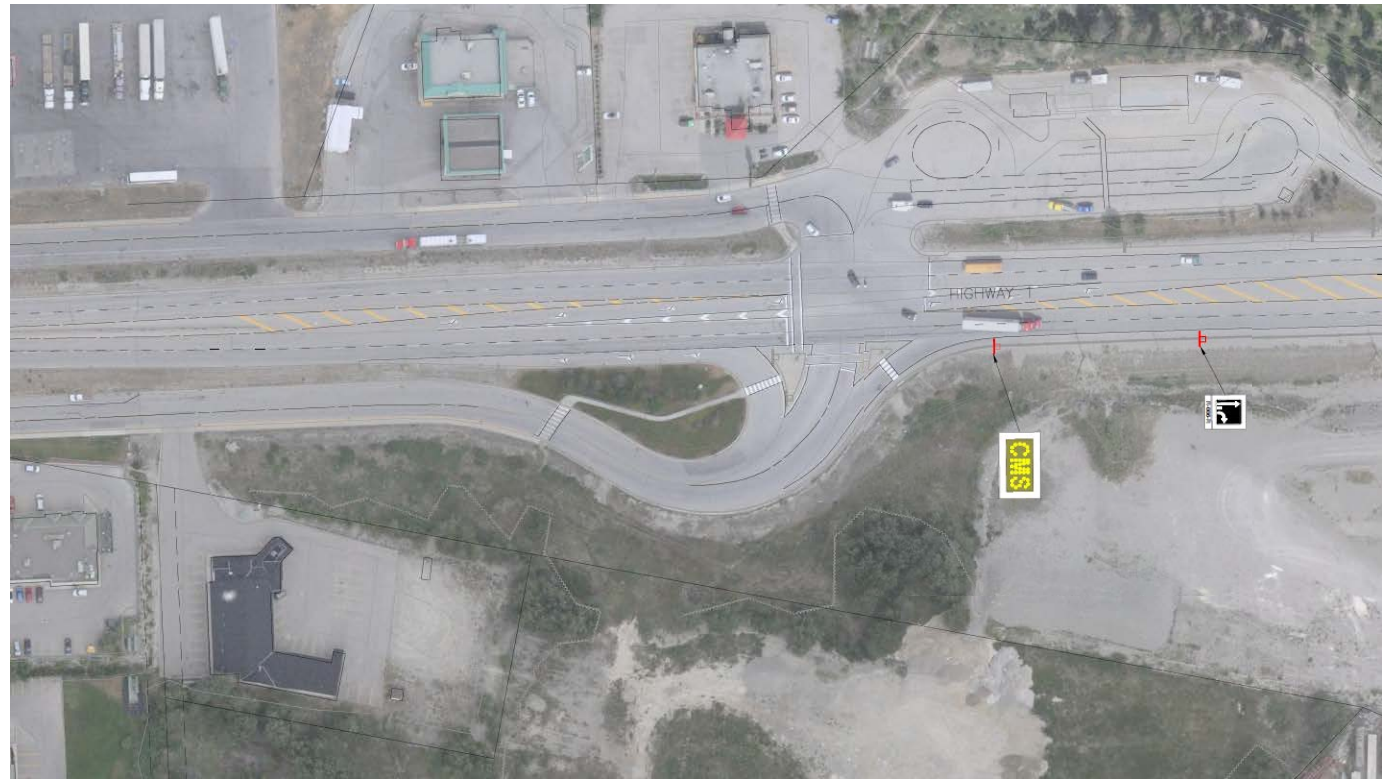
McLAREN LODGE

GOLDEN VILLAGE INN

KICKING HORSE CANYON B & B

PURCELL HELI SKIING

GLACIER RAFT COMPANY



Hwy 95 / 6th St N Temporary Signal

- Install a temporary traffic signal at the Highway 95 and 6th Street North intersection
 - Provides a location for cross-street traffic to comfortably access Highway 95 when volumes are increased on Highway 95 during the detour
 - Signal will result in platoons and regular gaps in traffic at the Highway 95 loop ramp



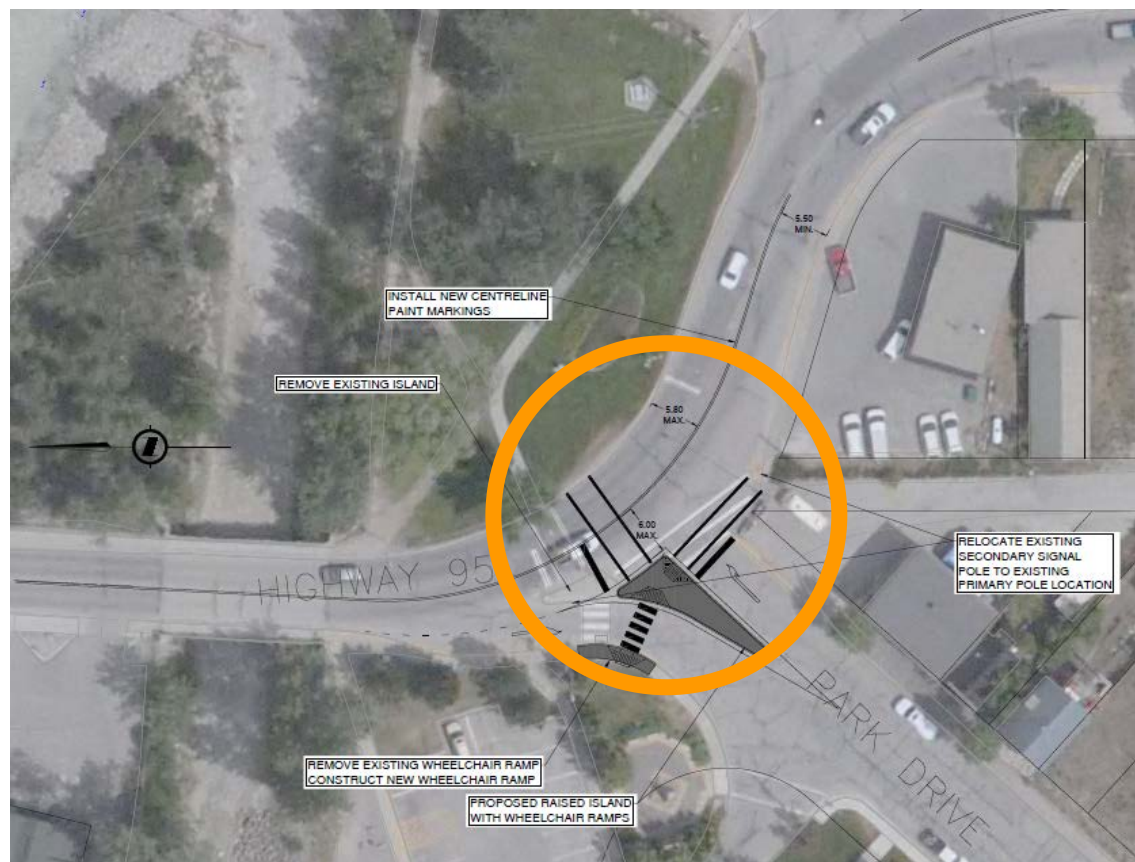
Increase Storage for Northbound Left-Turn at 6th St N

- Increase storage of the existing left-turn bays for northbound traffic using pavement markings and temporary delineators at 6th Street North
 - Pavement markings to be retained after each detour period
 - Delineators will be removed after each detour period



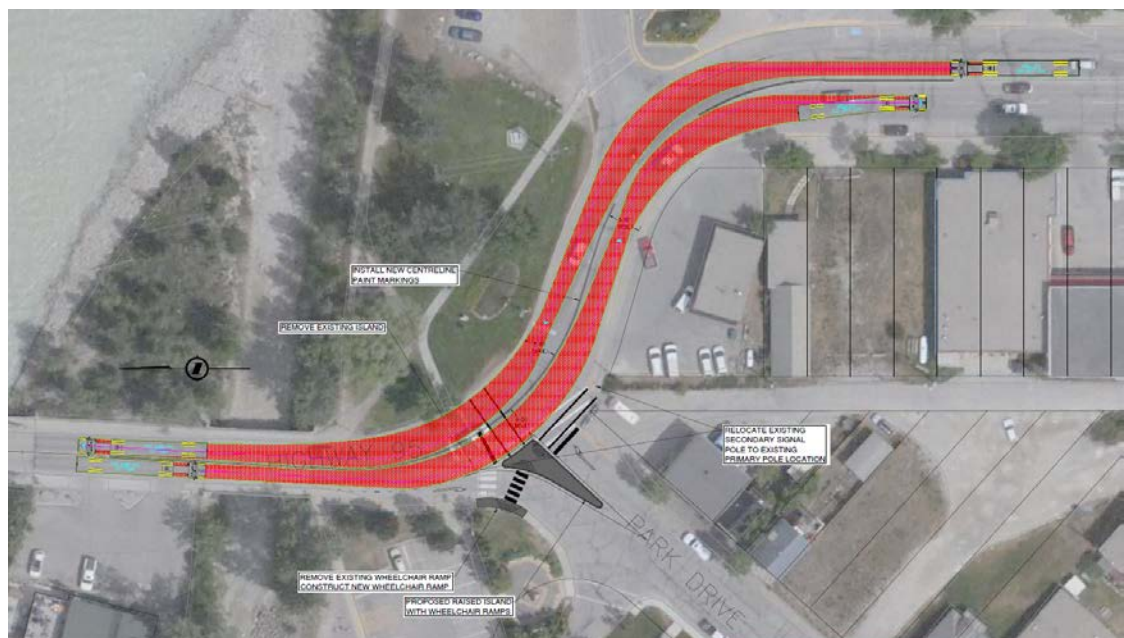
Realign Highway 95 near Park Dr (permanent change)

- Re-align the Highway 95 centreline to reduce heavy vehicle overtracking issues at the approach to the Kicking Horse Bridges
- Relocate existing traffic island at Park Drive
- Convert Park Drive to right-in/right-out (RIRO)
- Relocate crosswalk to new island
 - Move pathway connections to new crosswalk



Realign Highway 95 near Park Dr (permanent change)

- Re-align the Highway 95 centreline to reduce heavy vehicle overtracking issues at the approach to the Kicking Horse Bridges
- Relocate existing traffic island at Park Drive
- Convert Park Drive to right-in/right-out (RIRO)
- Relocate crosswalk to new island
 - Move pathway connections to new crosswalk



Install Flashing Beacons at 5th St N & 11th St S

- Install Rapid Rectangular Flashing Beacons (RRFB) at the 5th Street North and 11th Street South intersection
- 5th Street North currently has overhead signs
- 11th Street South currently has overhead signs with flashers
- RRFBs will provide improved visibility of crosswalk



Performance – Hwy 1 & Hwy 95

Weekday PM Peak Hour

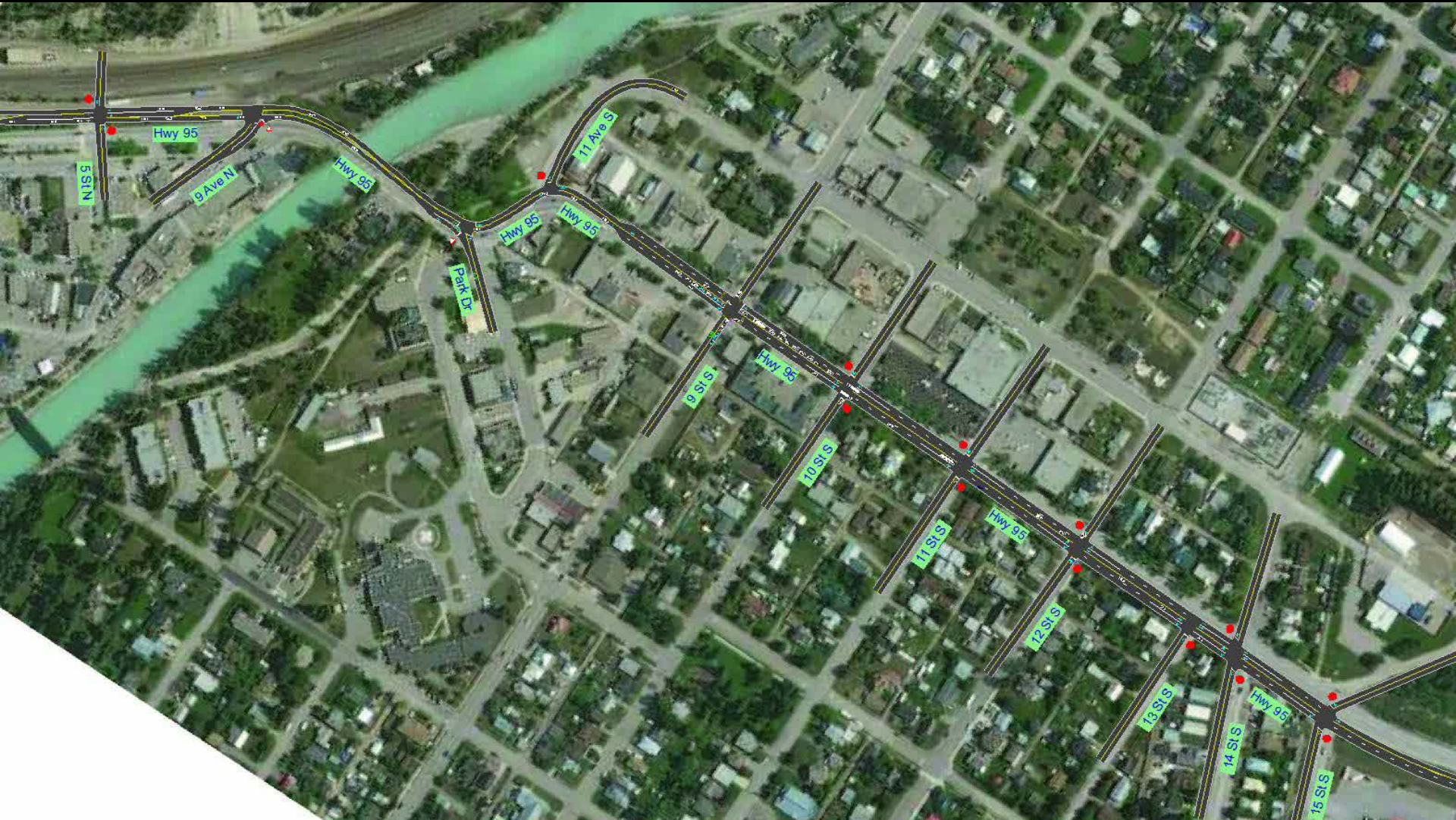


Performance – North End Weekday PM Peak Hour



Performance – South End

Weekday PM Peak Hour



Additional Measures – Golden to Radium

Hwy 93/95 enhancements

- Working with school district on Hwy 95 school bus operations
- Lane markings & signage, including wildlife warnings
- Coordination with Ministry Operations on current initiatives, e.g.:
 - Paving Radium – Brisco
 - Radium roundabout



Moving Forward

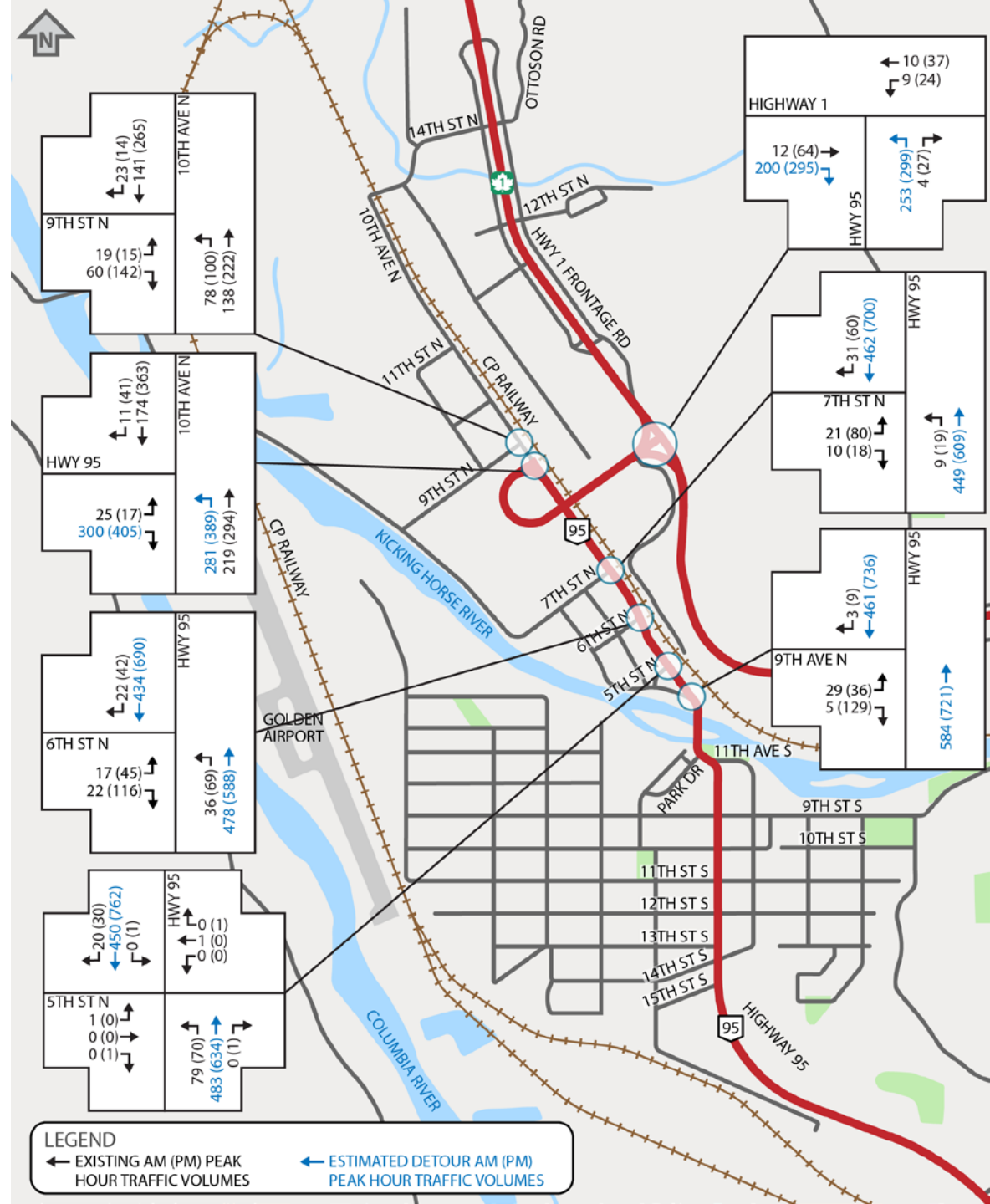
- Design Build procurement
- Request for Qualifications – done September 2019
- Public information sessions: Fall 2019 (Golden, Radium; Parks Canada-facilitated in Field & Lake Louise)
- Request for Proposals – December 2019
- Contract award – 2020
- Completion: Winter 2023/24



Thank you!

Traffic Volumes

- North of river



Traffic Volumes

- South of river

