



# **Kicking Horse Canyon Project – Phase 4**

**Project Overview & Update – Columbia Shuswap Regional District  
October 17, 2019**

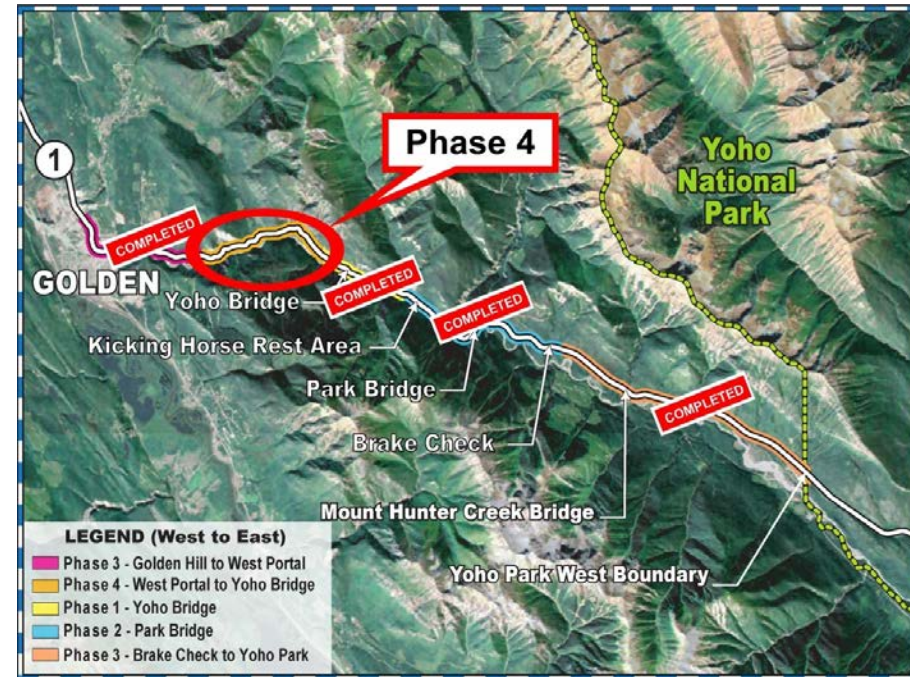
## Presentation Overview

- Project Overview and Objectives
- Technical Challenges
- Reference Concept
- Community & Stakeholder Engagement / What We Heard
- Traffic Management Strategy
- Moving Forward



## Project Overview

- Final phase of 26 km project that began in 2003
- Design-Build
- Upgrade 4.8 kilometres to 100 km/h standard:
  - Widen to 4 lanes with median barrier & wider shoulders to accommodate cyclists
  - Safe access for local roadway connections
- RFQ issued Sept 5, 2019; planning for construction 2020 – Winter 2023/24
- Approved budget \$601 million:
  - \$215.2 million (Canada);
  - \$385.8 million (BC)



## Project Objectives

- Improve traveller safety
- Improve highway capacity & reliability
- Mitigate rock-fall and avalanche hazards
- Reduce vehicle-wildlife collisions through fencing and passage structures

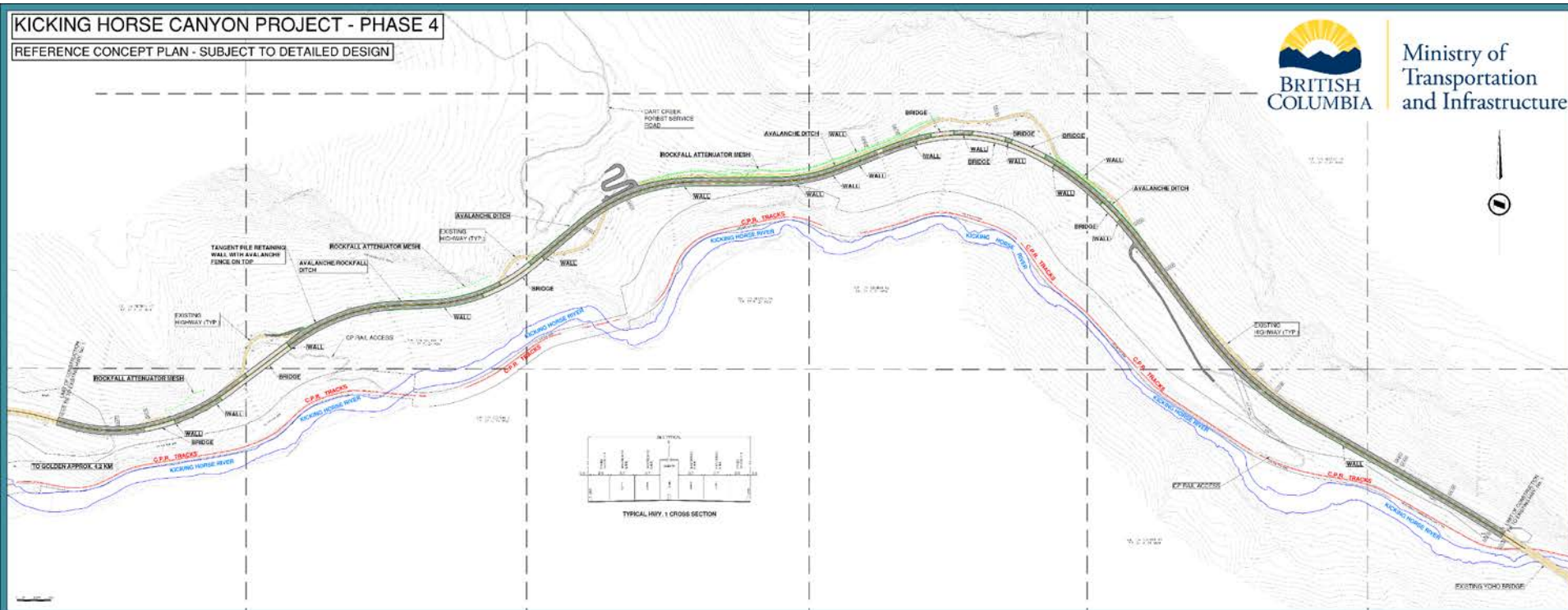


## Technical Challenges

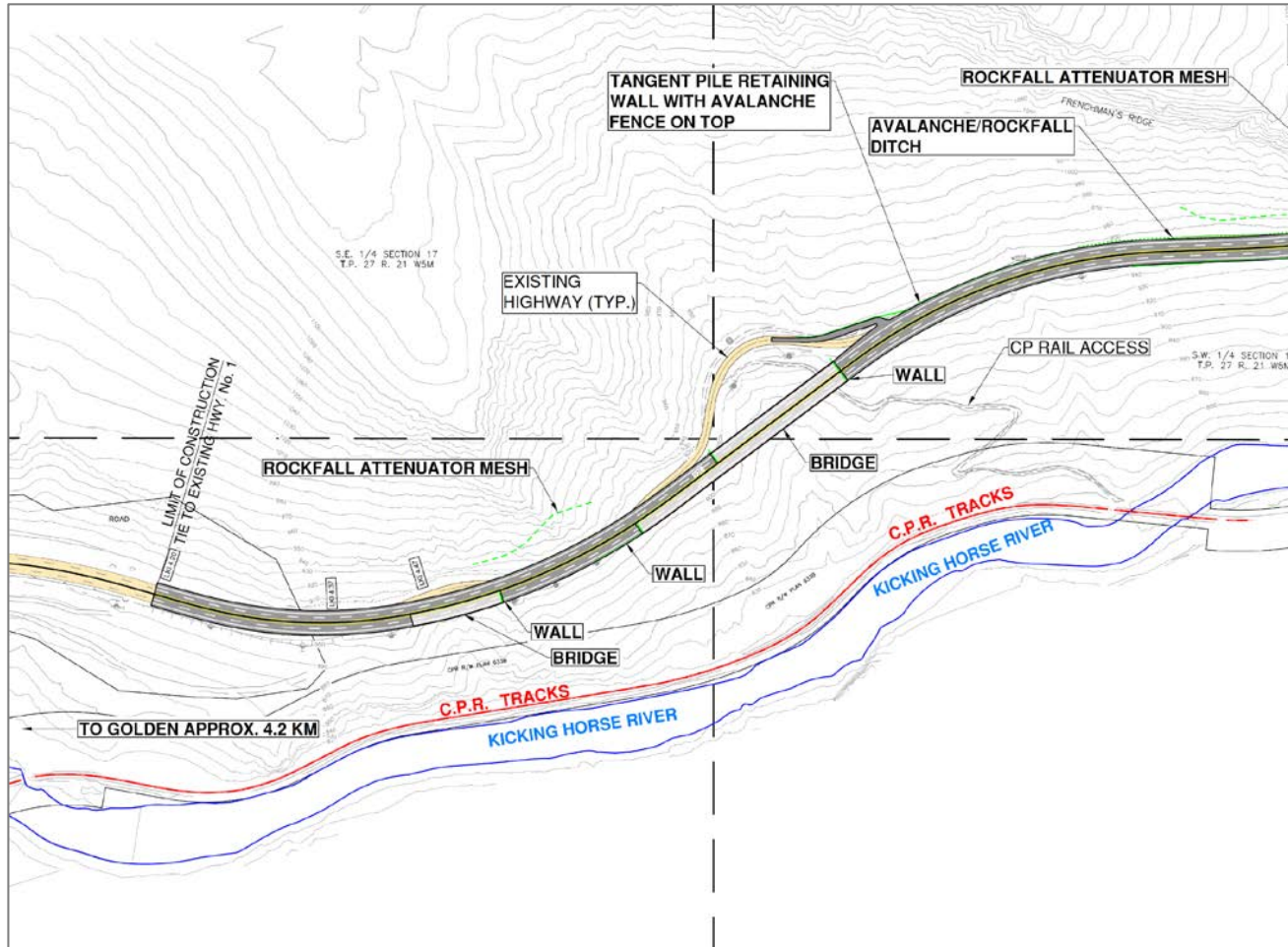
- Narrow, constrained terrain
- Heavily-travelled corridor
- Steep, high and unstable slopes from which large quantities of material need to be excavated
- Protecting safety of crews & travelling public
- Drop-off to the Kicking Horse River and CP rail tracks below



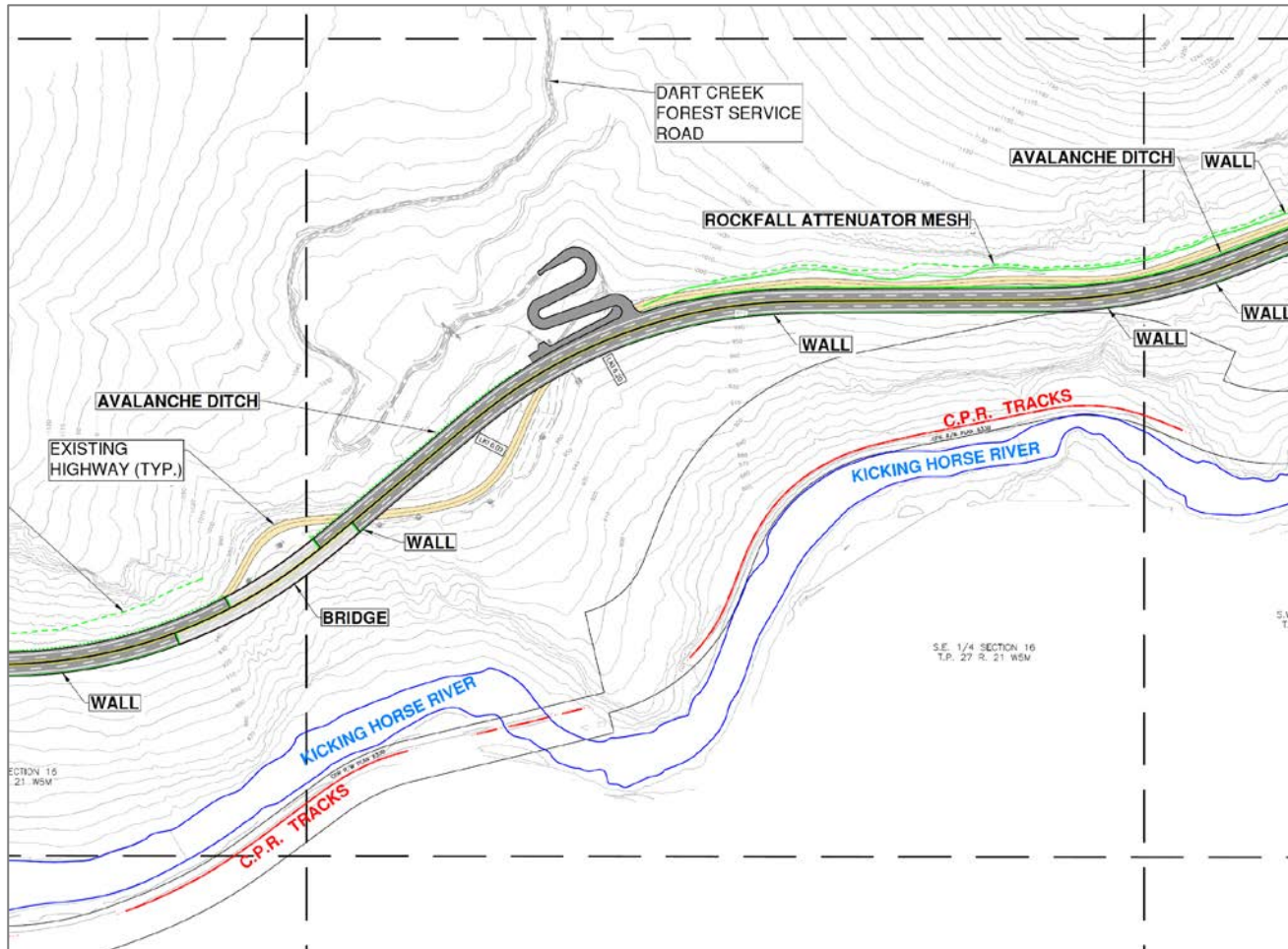
## Design-Build Reference Concept



## Design-Build Reference Concept



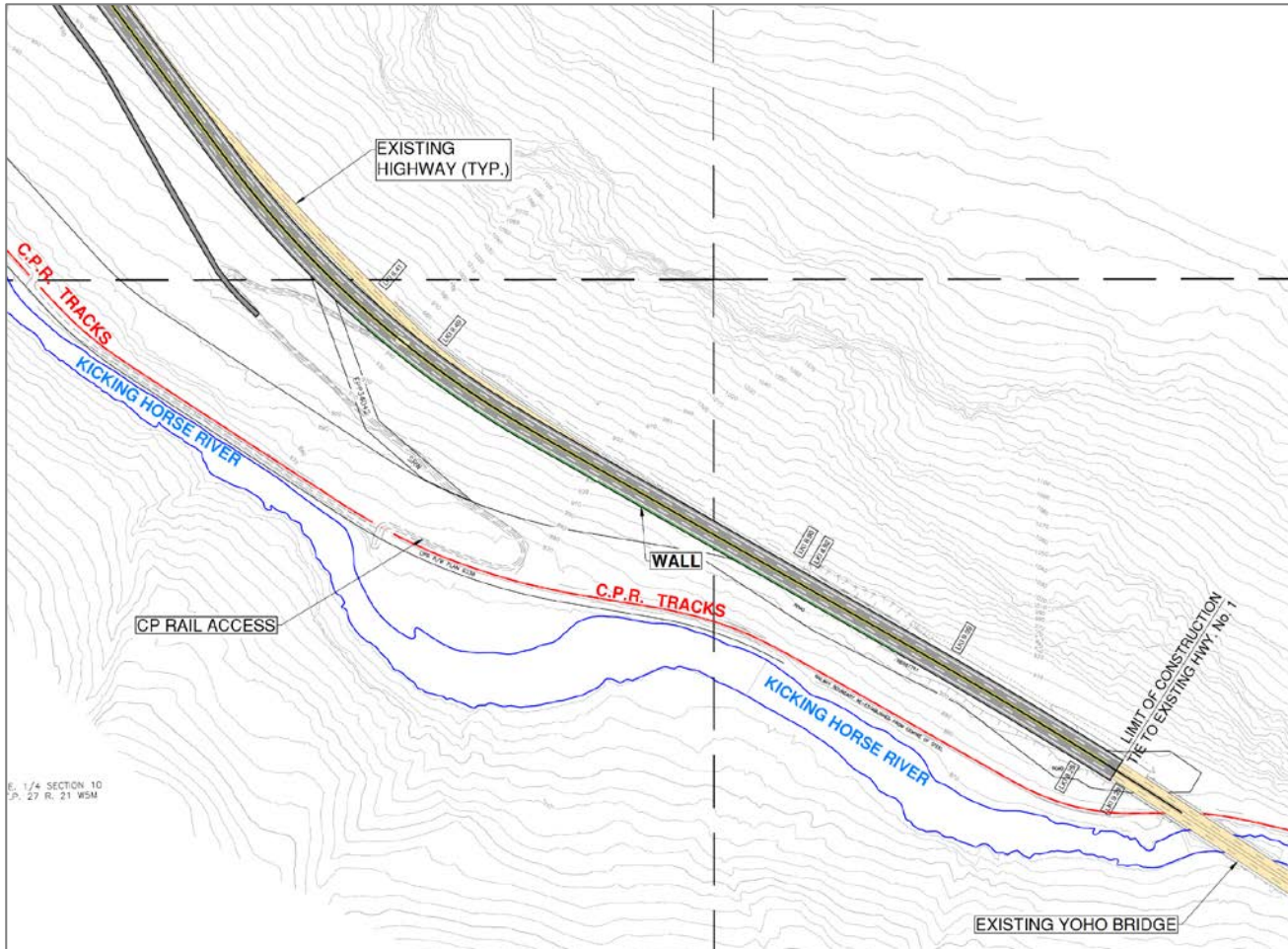
## Design-Build Reference Concept







## Design-Build Reference Concept



## Community & Stakeholder Engagement

- In past year, more than 30 meetings with key stakeholder groups and organizations
- Community Liaison Committee (CLC) established October 2018
- Dialogue has included traffic management – effects & considerations including:
  - Timing
  - Communications
  - Alternate route



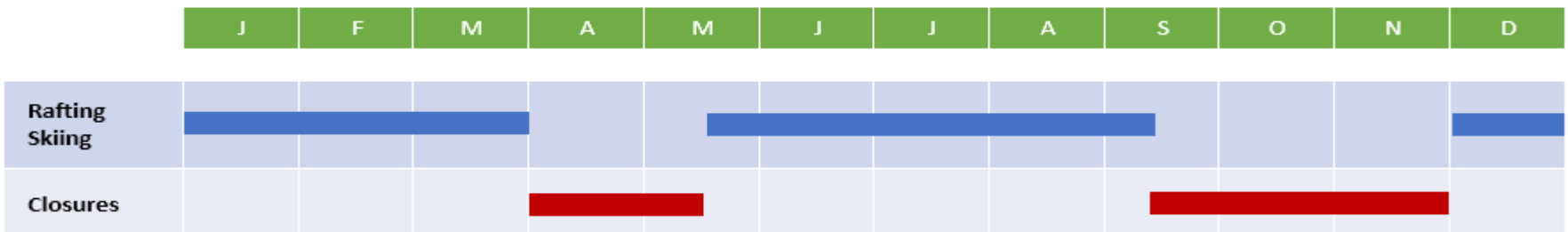
## What We Heard

- Ensure emergency access is maintained on short notice
- Golden – Field connection for commuters & students
- Early & reliable notification to permit advance planning for commercial transportations & others
- Consider effects on Hwys 93 & 95



## Traffic Management Strategy

- Safety of crews & travelling public is highest priority
- Challenging construction area; local detour options not available
- Highway closures required to ensure safety & reliability during construction
- Key principles limiting closures to off-peak periods:
  - Avoiding closures during the daytime in summer
  - Potential for extended 24-hour shoulder-season closures
  - Emphasis on night-time work year-round
  - Extensive communications and continued engagement



## Traffic Management Strategy

### Extended closures – commuter passage

- Twice-daily windows for commuters & school buses
- Priority to first responders at all times
- Encourage car pooling



## Traffic Management Strategy

### Hwy 93/95 enhancements

- Working with school district on Hwy 95 school bus operations
- Lane markings & signage, including wildlife warnings
- Spot improvements in Golden
- Coordination with Ministry Operations on current initiatives, e.g.:
  - Paving Radium – Brisco
  - Radium roundabout



## Moving Forward

- Design Build procurement
- Request for Qualifications – done September 2019
- Public Information sessions:  
Fall 2019 (Radium October 29;  
Golden October 30;  
Parks Canada-facilitated in  
Field & Lake Louise)
- Request for Proposals –  
December 2019
- Contract award – 2020
- Completion: Winter 2023/24







# Kicking Horse Canyon Project – Phase 4

*Thank you!*