

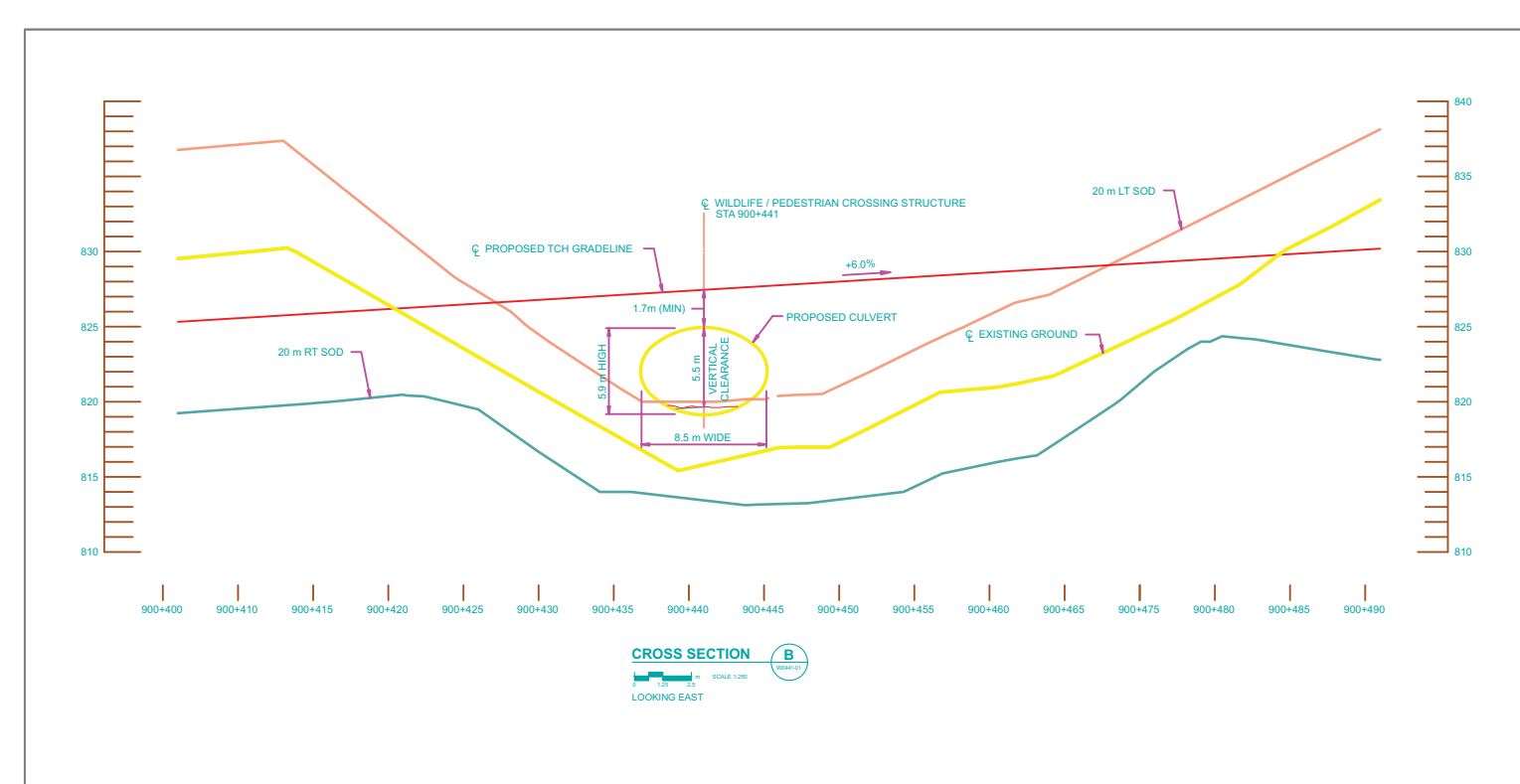
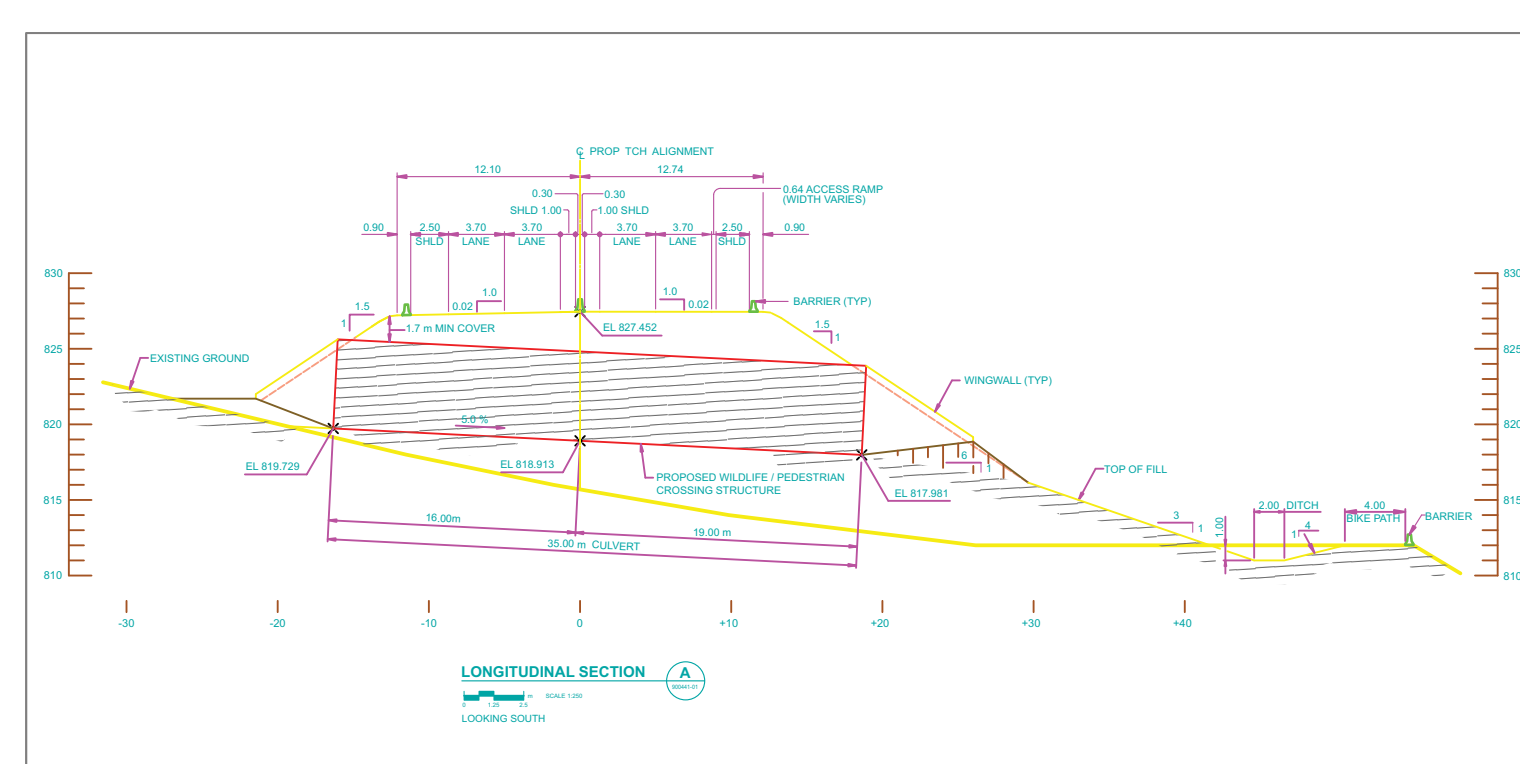
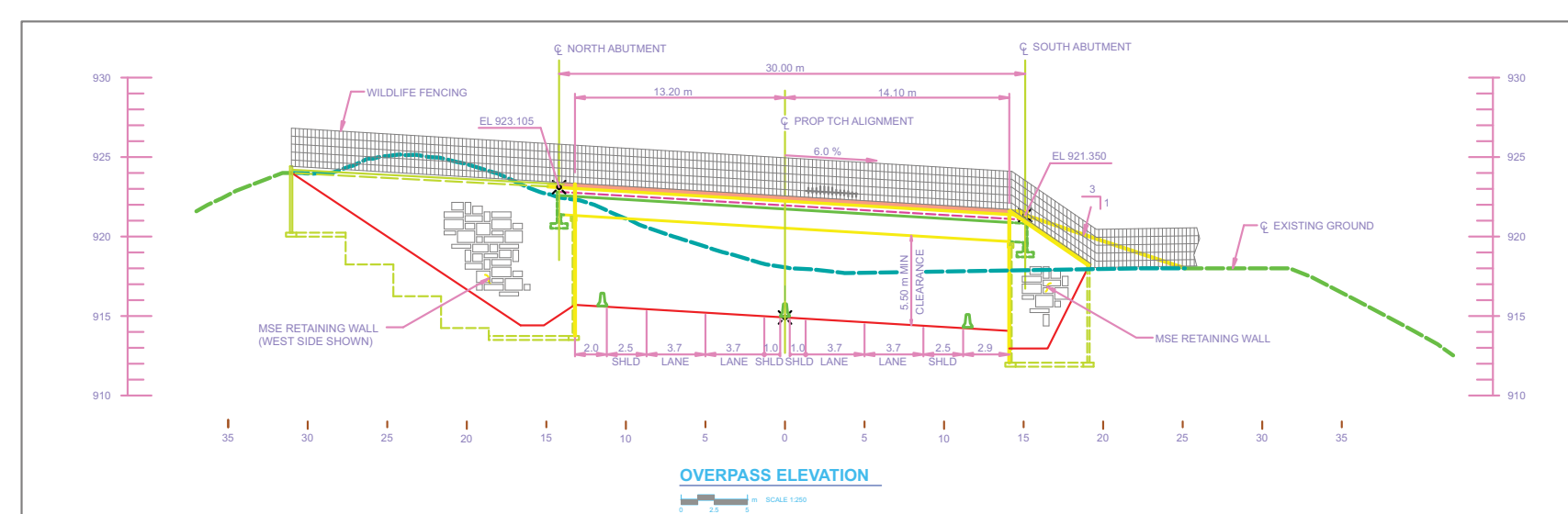
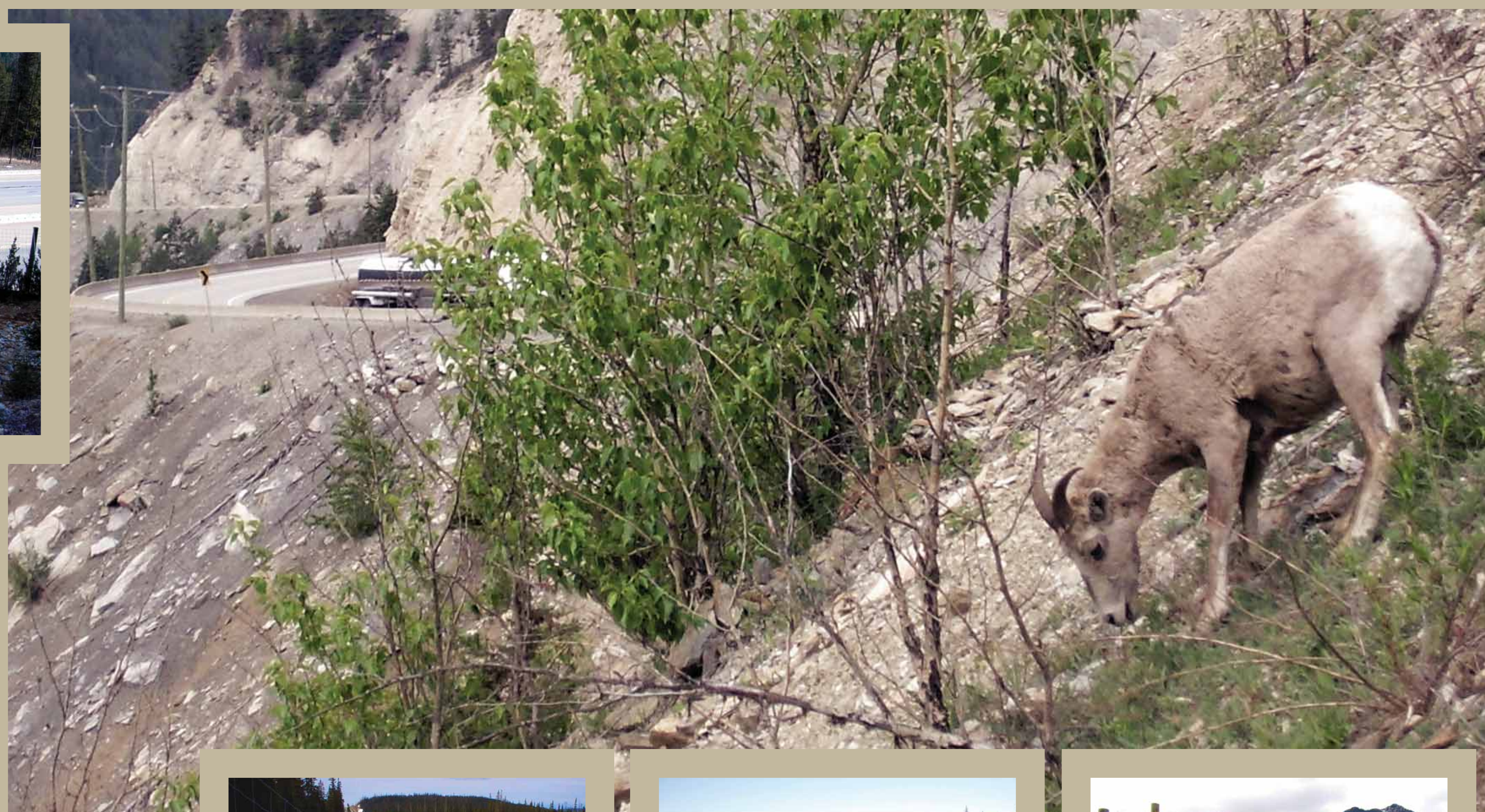
WILDLIFE PROTECTION

April 15, 2008

Highway improvements will include protection for wildlife to reduce the risk of collisions and improve safety for both animals and motorists.



Overpass and underpass structures similar to those shown left and above will provide safe crossing opportunities for wild animals.



Bighorn sheep and other animals are commonly found near the highway. Extensive exclusion fencing, (LEFT) combined with ungulate guards (CENTRE) and one-way escapes (RIGHT) will greatly reduce wildlife collisions.